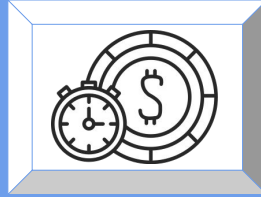
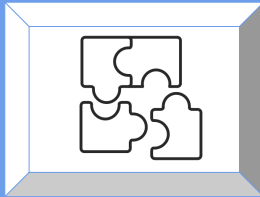


MEP Administrators Meeting



May 4, 2022

DIVISION OF INSTRUCTIONAL SUPPORT | OFFICE OF SCHOOL IMPROVEMENT, ACCOUNTABILITY AND COMPLIANCE | MIGRANT EDUCATION PROGRAM



Division of Instructional Support | Office of School Improvement, Accountability and Compliance | Migrant Education Program
©2022 REGION ONE EDUCATION SERVICE CENTER



Workshop Information



- Workshop [#193575](#)
- Check in code: **Migrant**
- Email Ms. Dalia Barbosa, dbarbosa@escl.net, if you are unable to check in remotely.



PURPOSE

To provide guidance and support to district administrators on the Migrant Education Program implementation updates



3

Division of Instructional Support | Office of School Improvement, Accountability and Compliance | Migrant Education Program
©2022 REGION ONE EDUCATION SERVICE CENTER



Agenda

2022-2023 Migrant Program Funding Options

2022-2023 ESSA Grant Information, MEP Overview, Provisions & Assurances, Strategic Priorities, and Lessons learned.

Migrant Education Program Coordination

*ID&R Stronger Together Initiative
Mobile Passport*

Region One MEP Support Systems

Upcoming Professional Development, Technical Assistance Opportunities, and Materials and Resources.

4

Division of Instructional Support | Office of School Improvement, Accountability and Compliance | Migrant Education Program
©2022 REGION ONE EDUCATION SERVICE CENTER



Objectives



FUNDING OPTIONS

Leverage existing funds, human capital, and expertise.



MEP COORDINATION

Create awareness of two Region One MEP Initiatives



SUPPORT SYSTEMS

Review upcoming trainings, technical assistance, and resources

5

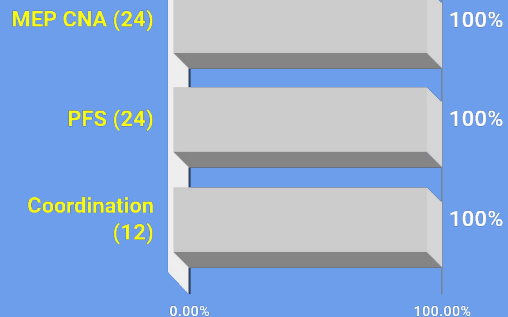
Division of Instructional Support | Office of School Improvement, Accountability and Compliance | Migrant Education Program
©2022 REGION ONE EDUCATION SERVICE CENTER



Title I Part C 2021-2022 Random Validation Requirements & Results

All statewide MEP staff recognized on
Excellent Results for all three criteria

100% Met Requirement



6

Division of Instructional Support | Office of School Improvement, Accountability and Compliance | Migrant Education Program
©2022 REGION ONE EDUCATION SERVICE CENTER



Compliance Reports

- ❑ [2021-2022 ESSA Compliance Reports - Didi Garcia](#)
- ❑ [2021-2022 Draft Compliance Reports](#)
- ❑ [TEA Grant Compliance and Administration - Cory Green](#)

7

Division of Instructional Support | Office of School Improvement, Accountability and Compliance | Migrant Education Program
©2022 REGION ONE EDUCATION SERVICE CENTER



2022-2023 Funding Options

SAMPLE ISD

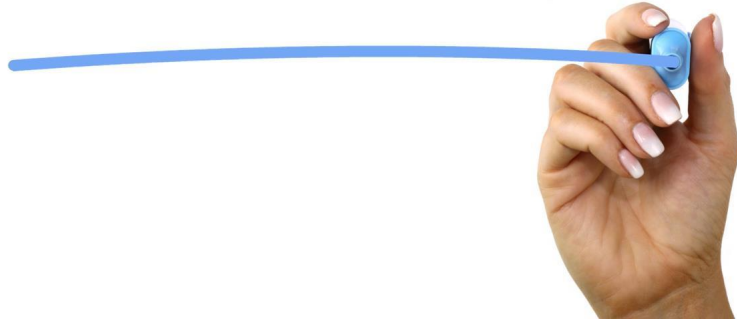


8

Division of Instructional Support | Office of School Improvement, Accountability and Compliance | Migrant Education Program
©2022 REGION ONE EDUCATION SERVICE CENTER



QUESTIONS



9

Division of Instructional Support | Office of School Improvement, Accountability and Compliance | Migrant Education Program
©2022 REGION ONE EDUCATION SERVICE CENTER



Application Release Dates

May 18, 2022

ESSA Consolidated Application

September 2, 2022

Applications are due.



10

Division of Instructional Support | Office of School Improvement, Accountability and Compliance | Migrant Education Program
©2022 REGION ONE EDUCATION SERVICE CENTER



ESSA Federal Grant Application Training

TEA - June 7, 2022 9:00 - 11:00 a.m.
Region One - June 8, 2022

Face to Face

Houston (ESC 4) - June 1, 2022 9:00 - 3:30 p.m.
Austin (ESC 13) - June 24, 2022 9:00 - 3:30 p.m.
Registration forthcoming GovDelivery Bulletin

TEA F2F  June 1st

[TEA Virtual](#)  June 7th

[ESC | F2F](#)  June 8th

TEA F2F  June 24th

11

Division of Instructional Support | Office of School Improvement, Accountability and Compliance | Migrant Education Program
©2022 REGION ONE EDUCATION SERVICE CENTER



COE Records Retention

Fiscal Agents, and SSA Member Districts

P. 2.39 of the Texas ID&R Manual

- Retained for 10 Years from the date of the QAD.
- ESCs must obtain copies of all original COEs
- Maintained in alphabetical order
- Organized by female parent/guardian



12

Division of Instructional Support | Office of School Improvement, Accountability and Compliance | Migrant Education Program
©2022 REGION ONE EDUCATION SERVICE CENTER



5 % RULE

Migrant Code & ADA Funding

- A Migrant adjustment is available for districts with a population of **5%** or more.
- **Best 4 of 6 six week periods** used for the purpose of ADA funding.
- Migrant population comes from the **PEIMS Summer Submission** status.
- Request **PDM3-130-005** PEIMS Report

District	2019-2020 Summer	2020-2021 Summer	2021-2022 Fall
Donna	6.1%	4.8%	3.7%
Edcouch-Elsa	12.0%	10.4%	8.2%
Hidalgo	5.7%	5.0%	4.2%
La Feria	5.2%	4.8%	4.5%
La Joya	5.1%	4.5%	3.8%
La Villa	19.00%	16.4%	14.5%
Lasara	13.0%	13.0%	9.2%
Monte Alto	12.0%	7.2%	5.2%
Progreso	9.9%	8.1%	6.8%
Raymondville	9.2%	9.6%	8.0%
Rio Grande City	9.4%	9.0%	9.6%
Rio Hondo	5.3%	4.4%	3.9%
San Benito	7.0%	6.6%	6.1%
Santa Maria	9.7%	11.1%	9.2%

QUESTIONS





ROOMIES:

Get a card.

Place marker on the MEP word when called.



ZOOMIES:

Choose a card from the [online Bingo cards](#).

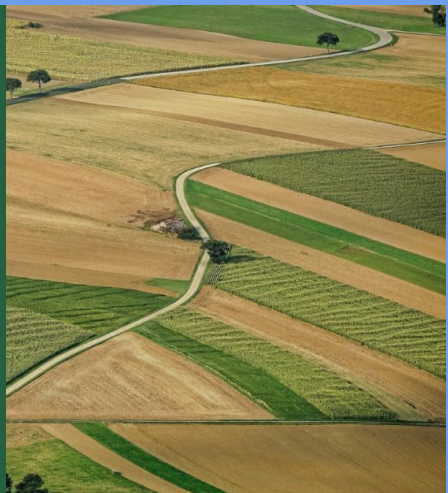
Label the card with your name.

Place marker on the MEP word when called.

MIGRANT BINGO



ID&R Stronger Together Initiative

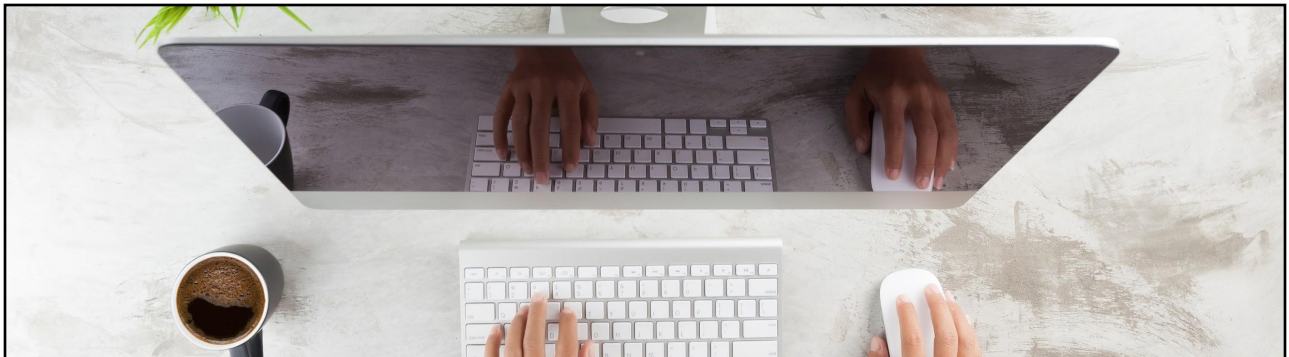


Mobile Passport



17

Division of Instructional Support | Office of School Improvement, Accountability and Compliance | Migrant Education Program
©2022 REGION ONE EDUCATION SERVICE CENTER



Texas NGS Helpdesk

1 - 877 - 234 - 7030

18

Division of Instructional Support | Office of School Improvement, Accountability and Compliance | Migrant Education Program
©2022 REGION ONE EDUCATION SERVICE CENTER



Resource Link Library

TX-NGS Help Desk Procedures

TX-NGS Technical Assistance Form

Password Reset

TX-NGS Oath Form



1 - 877 - 234 - 7030



Email- kbrisen@esc1.net

Email- migrantidr@escreaionone.samanage.com

19

Division of Instructional Support | Office of School Improvement, Accountability and Compliance | Migrant Education Program
©2022 REGION ONE EDUCATION SERVICE CENTER



Texas Migrant Family Helpline

1-888-984-6251

**Monday - Friday
8:00 AM - 4:30 PM**



20 Division of Instructional Support | Office of School Improvement, Accountability and Compliance | Migrant Education Program
©2022 REGION ONE EDUCATION SERVICE CENTER





TX MEP ID&R Data Dashboard

[ID&R Data Dashboard \(google.com\)](https://www.google.com)



21

Division of Instructional Support | Office of School Improvement, Accountability and Compliance | Migrant Education Program
©2022 REGION ONE EDUCATION SERVICE CENTER



21/22 TX ID&R Dashboard

H-2A & H-2B Job Orders

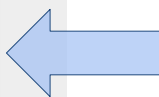
EOE Dashboard

Move From Locations

Migrant Labor Housing Facili...

Farm Labor Contractors

Meat Processing Plants



County	Locations	Capacity
DALLAM	34	908
CRANE	2	502
LEE	7	353
ERAZOS	7	350
WHARTON	22	316
HARTLEY	29	302
GREGG	1	280
FRIO	11	276
1 - 100 / 169		< >

Facility Name	County	Location Address	City
2 L Cattle Company, Cucaracha Cattle Co.	LA SALLE	861 Baylor Ranch Rd	Cotulla
2 J Donnell Livestock, LLC	MCMULL	501 Highway 97 West	Fowerton
2T Partnership	REEVES	705 Bone Springs St	Pecos
2T Partnership	REEVES	450 CR 124	Pecos
2T Partnership	REEVES	78 TNT Road	Pecos
3C Cattle Co Housing	WEBB	8730 Mines Rd, Lot TMP	Laredo
3KF Farms	DALLAM	475 TX-102	Dishart
3KF Farms	DALLAM	13601 Carrizo Rd	Texline



Upcoming Trainings

- [#196263](#) 5.17 Project Smart New AM
- [#196284](#) 5.17 Project Smart Returning PM
- [#227333](#) 5.18 Reg PAC TOT #3_Shine with Your Kids (IP)
- [#194872](#) 5.19 TX-NGS/MSIX Summer On Demand Video Training (V)
- [#195147](#) 5.22 AM ABB Summer for New Staff (H)
- [#195160](#) 5.22 ABB Summer for Ret Staff On Demand Video Training (V)
- [#196279](#) 5.21 AM Project Smart Part 1 - New Staff (IP)
- [#196287](#) 5.21 AM Project Smart Part 2 - Returning Staff (IP)
- [#196288](#) 5.21 PM Project Smart Part 2 - New & Returning Staff (IP)



QUESTIONS





ROOMIES:

Get a card.

Place marker on the MEP word when called.



ZOOMIES:

Choose a card from the [online Bingo cards](#).

Label the card with your name.

Place marker on the MEP word when called.

MIGRANT BINGO



Resources

Title I Part C FAQs	ESSA Funding Reference Manual	Migrant Bingo	Bingo Calling Cards	2021-2022 ESSA Compliance Reports Didi Garcia	2021-2022 Draft Compliance Reports
Cory Green Grant Compliance & Admin	Sample ISD Presentation Funding Options	AIIMS Portal Presentation ACET	Effective MEP Plans for Migratory Children	What to Expect 22-23 ESSA Application	SNS Revised Handbook 5.0



Your Region One MEP Team



Martha Hinojosa

Director of Migrant Education
mhinojosa@esc1.net
956-984-6240



Tana Armitage

MEP Specialist
tarmitage@esc1.net
956-984-6248



Julissa Sandoval

MEP Specialist
jsandoval@esc1.net
956-984-6255



Graciela Avila

MEP Specialist
gavila@esc1.net
956-984-6194



Nelly Pecina Torres

MEP Specialist
na.torres@esc1.net
956-984-6187



Karim Briseno

State TX-NGS Specialist
k.briseno@esc1.net
956-984-6186

27



Dalia Barbosa

Lead Program Assistant
dabarbarosa@esc1.net
956-984-6166



Beatrice Garcia

TX-NGS/ Recruiter
beagarcia@esc1.net
956-984-6251



Melba Garza

TX-NGS/ Recruiter
mgarza@esc1.net
956-984-6107



Intellectual Property Statement

All materials, content, and forms contained in this training/presentation are the intellectual property of the Region One Education Service Center and are intended for use by session participants at the classroom, campus, or district level only. Materials are to be used **“as is”** without modification.

Materials may not be used for personal benefit or financial gain or for use outside of the school system.

